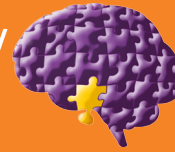


# 50+ Years of the Pituitary – Past, Present & Future



**Patient, Carer and Family Education • Interested Health Providers Welcome to Attend**

**LOCATION:** NAB Auditorium, Garvan Institute of Medical Research  
384 Victoria Street Darlinghurst Sydney NSW 2010

**DATE:** Saturday May 28th, 2016 **TIME:** 8.50am commencement

8.30am – 8.50am	Registration
8.50am – 9.00am	Welcome, Australian Pituitary Foundation
9.00am – 9.30am	<b>50 years of pituitary at St Vincent's</b> Speaker: Dr Ann McCormack, Endocrinologist, St. Vincent's Hospital.
9.30am – 10.00am	<b>New medical therapies for pituitary tumours</b> Speaker: Dr Ann McCormack, Endocrinologist, St. Vincent's Hospital.
10.00am – 10.30am	<b>Radiation therapy for pituitary tumours in 2016</b> Speaker: Dr Cecelia Gzell, Radiation Oncologist, St. Vincent's Hospital.
10.30am – 11.00am	Morning tea
11.00am – 11.30am	<b>What is the hypothalamus exactly?</b> Speaker: Prof Mark McLean, Endocrinologist, Blacktown Hospital Clinical School.
11.30am – 12.00pm	<b>Eye disease, vision and pituitary tumours</b> Speaker: A/Prof Clare Fraser, Neuro-Ophthalmologist, St. Vincent's Hospital.
12.00pm – 12.30pm	<b>Exercises for resilience while faced with a chronic condition</b> Speaker: Kimberley Au, Exercise Physiologist, St. Vincent's Hospital.
12.30pm	Close & Lunch

This is a free public seminar. We welcome you, your friends, family and colleagues.  
Please encourage your GP to attend. Registrations are essential.

**REGISTRATION deadline: 18th May 2016.**

You can register directly on-line at <https://www.surveymonkey.com/r/Garvan2016>

Alternatively go to Events area of our website [www.pituitary.asn.au](http://www.pituitary.asn.au) to download a registration form to send to PO Box 570, Mt. Ommaney. QLD 4074 or fax to: 07 3376 2896.

Not on email? Phone: 1300 331 807 to request a registration form.

If you wish to know more please contact APF on [registrations@pituitary.asn.au](mailto:registrations@pituitary.asn.au) or Phone 1300 331 807

The content of this seminar has been independently prepared by the APF and honorary speakers. This program is subject to change at any time.

Sponsored by educational grants from:



## FINDING THE GARVAN

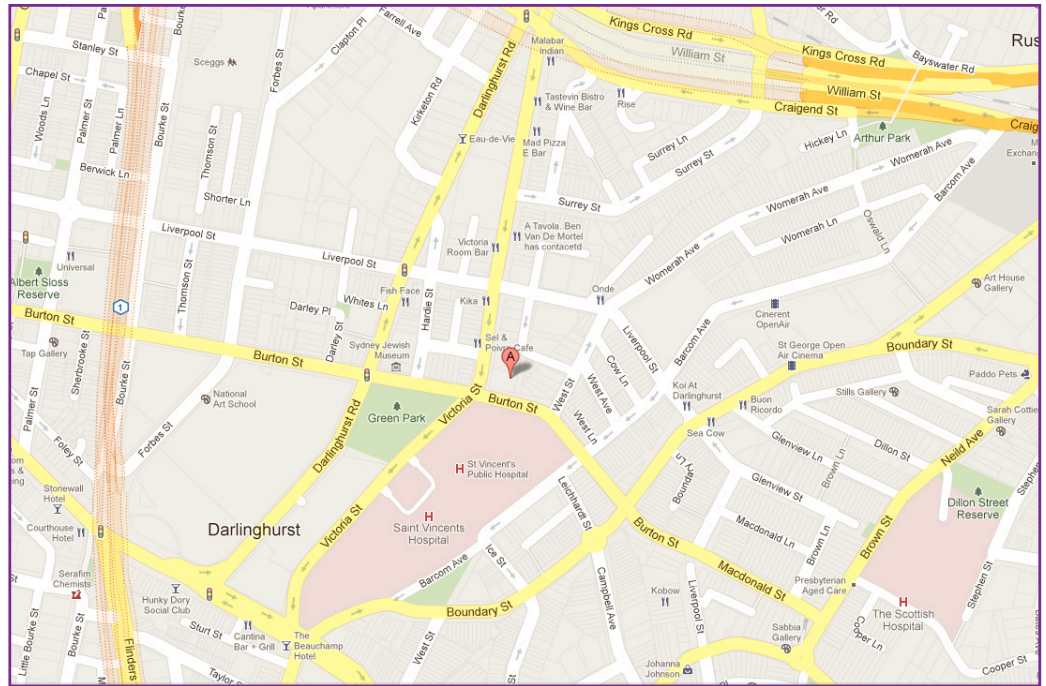
Garvan is located next to St Vincent's Hospital on the corner of Victoria and Burton Streets in Darlinghurst, approximately 2 kms from the centre of Sydney.

Access to Garvan by public transport is relatively simple. Bus routes 389 and 311 stop on Burton Street, and buses 378, 380 and 382 stop nearby on Oxford Street. King's Cross Station is also a short walk from Garvan, exit the station towards William Street and continue walking up Victoria Street.

## PARKING

Metered parking is limited but available along Victoria Street, and there is a parking station at St Vincent's Hospital.

Enter Garvan via Burton Street.



## ACCOMMODATION

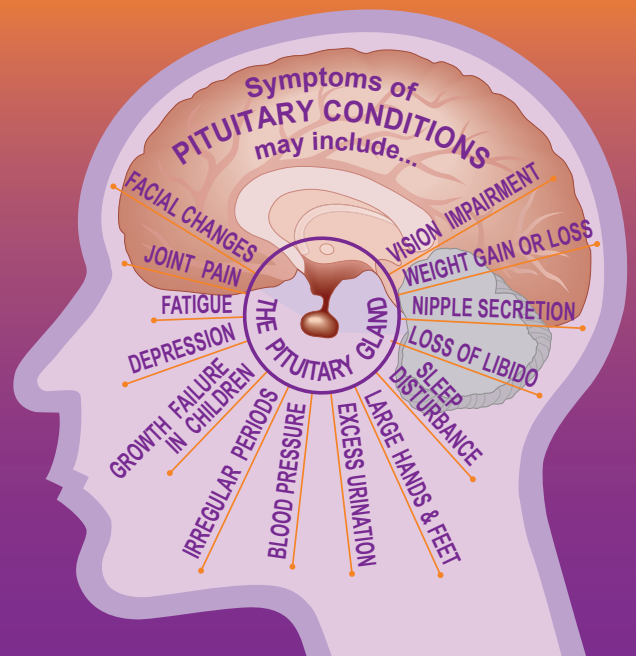
There is plenty of accommodation in the area at varying prices.

Located at the base of the brain, the pituitary is commonly referred to as the master gland because of the role it plays in controlling the function of all aspects of the body's vital endocrine system.

These glands produce complex hormone secretions which define the differences between male and female, regulate growth in childhood, control stress response, metabolism, body composition, vitality, emotions, sexual maturity and reproduction.

Any disturbance or failure of pituitary function can be potentially devastating.

You are invited to a public education seminar, which addresses various aspects of treating, managing and living with a pituitary condition.



The APF's mission is to support and educate people impacted by pituitary conditions. We convey awareness and provide relevant information to the general and medical communities and act as a collective voice for pituitary patients and their families.