



# annual report 23



# Contents

## TABLE OF CONTENTS

---

Introduction	03
Our People	04-05
Our MAC	06
Activities	07-09
Membership and Community	10
Financial Report	11-13
Thank You	14

# Introduction

The Australian Pituitary Foundation (APF) has continued to navigate a path of growth and engagement through the 2022-2023 year, welcoming change and embracing new opportunities for impact.



KIMBERLY DOWNES  
CO CHAIR



MALINI RAJ  
CO CHAIR

As the landscape of health advocacy evolves, we have remained steadfast in our commitment to improving the quality of life for patients living with pituitary conditions, and their families. With our Board's strategic guidance, the addition of new members, and the execution of key initiatives, the APF continues to act on its mission, increasing awareness and serving as a source of hope and a resource for the community.

This year, the APF was proud to welcome Dennis O'Brien and Marla Cawthorne to our Board of Directors. Dennis brings a wealth of expertise in engineering and a profound personal connection to pituitary conditions, having managed Cushing's Disease himself. His tenacity and resilience, particularly in facing recent health challenges, infuse our mission with a deeply personal perspective. His history of philanthropy and service through various avenues, including Rotary International, adds a seasoned voice to our strategic planning.

Marla, with her extensive background in financial services, portfolio, and governance management, along with her touching personal advocacy for her daughter with Hypopituitarism, joins us as both a seasoned professional and a passionate advocate. Her dual insights as a carer and a professional have already proven invaluable in guiding our mission to support pituitary patients and their families.

We offer our gratitude to each member of the Board for their unwavering commitment and service to the APF community. Their dedication, both individually and collectively, is a cornerstone of the positive impact and growth we continue to witness year after year. The synergy within the Board has been instrumental in navigating the challenges and embracing opportunities. While we celebrate the new additions to our Board, it is also imperative to acknowledge the continuous dedication of our long-standing members.

Equally, the APF Medical Advisory Committee (MAC) remains a pillar of expertise and guidance for our foundation. We extend our sincere appreciation for their unwavering dedication and invaluable contributions. Many members of the MAC have journeyed with the APF for a considerable duration, and their consistent support has been pivotal to our mission. Their expertise greatly enriches our cause, and their commitment resonates deeply with both the Board and the broader APF community. We are, as always, profoundly thankful.

- Kimberley Downes & Malini Raj,  
Co-Chairs of the Board of Directors

# Our People

## The Australian Pituitary Foundation Board of Directors



**Kimberly Downes**

**CO-CHAIR**

Kimberly is a strategic philanthropy leader and advocate, dedicated to advancing women's giving through innovative engagement and fostering a culture of generosity. As a published author and expert consultant, she extends her impact by guiding collaborative initiatives and serving in nonprofit board leadership roles.



**Malini Raj**

**CO-CHAIR**

Malini is a leader in community engagement, with a notable record in diversity advocacy and impactful contributions to health and inclusivity initiatives. Drawing from her personal journey with Cushing's Disease, she amplifies global awareness and inspires change.



**Yi Yuen Wang**

**BOARD MEMBER**

Yi Yuen is an esteemed neurosurgeon specialising in pituitary disorders with a leadership legacy at St Vincent's Hospital and past Chair of Australian Pituitary Foundation, coupled with a robust record in clinical research and education. His commitment extends beyond the operating room, as he actively engages in endurance triathlons to raise awareness for pituitary health.



**Geoff Musgrove**

**BOARD MEMBER**

Geoff is a seasoned commercial lawyer with a legacy of establishing and leading Maddocks Lawyers' largest commercial group, focusing on succession planning and governance for charities and private businesses. His personal experience with a pituitary tumour fuels his ongoing commitment to the APF, the support it provides to the medical community, and those living with pituitary conditions.



**Robert Price**

**TREASURER**

Rob is a dynamic financial executive with a 30-year tenure spanning global banks to Australian startups, specialising on strategy, and operations. His commitment to community shines through volunteerism in sports and charities. A sports enthusiast and football referee, Rob's leadership is shaped by his MBA and education from the London Business School.



**Lisa Sullivan**

**BOARD MEMBER**

Lisa is a distinguished leader in the pharmaceutical and medical communications industry, having established In Vivo Communications and spearheaded its growth across Australasia. Her dedication to continuing medical education is evidenced by her accreditation and innovative contributions to professional development programs for healthcare professionals.

# Our People

The Australian Pituitary Foundation  
Board of Directors and General Manager



**Dennis O'Brien**

**BOARD MEMBER**

Dennis, a retired Mechanical Engineer and Fellow of the Institute of Engineers Australia, has made significant contributions to engineering and philanthropy. His tenure at Norman Disney & Young culminated in executive roles and charitable initiatives, including establishing the NDY Charitable Trust and championing projects for vulnerable populations. His personal journey with Cushing's Disease and recent health challenges have deepened his commitment to medical and community support, underscoring his dedication to resilience and change.



**Marla Cawthorne**

**BOARD MEMBER**

Marla brings over a decade of expertise in financial services and governance to her role, with a rich background in managing high-profile projects for both local and governmental bodies. Her personal connection to pituitary conditions through her daughter's diagnosis has fueled her advocacy and dedication to supporting patients and their families. As part of the Australian Pituitary Foundation, she is committed to making a meaningful difference in the pituitary community.



**Shari Dawson**

**GENERAL MANAGER**

Shari, as the APF's General Manager, brings a wealth of experience from her background in marketing and business development in diverse sectors, including entertainment and social impact organisations. Her personal journey with Acromegaly and dedication to the pituitary community are the cornerstones of her mission to enhance patient support and expand the Foundation's reach. Her vibrant energy and deep commitment to driving awareness and support underpin her leadership role.

# 2023

# Our MAC

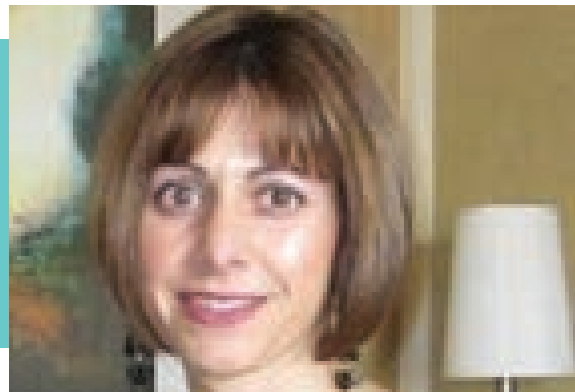
The Australian Pituitary Foundation  
Medical Advisory Committee



**Ann McCormack**

**ENDOCRINOLOGIST**

Associate Professor McCormack leads the Hormones and Cancer Group at the Garvan Institute and actively shapes pituitary research and care standards in Australia.



**Carmela Caputo**

**ENDOCRINOLOGIST**

Dr. Carmela Caputo is a holistic endocrinologist specialising in pituitary disorders, providing tailored care and serving as a co-medical advisor for the Australian Pituitary Foundation.



**James King**

**NEUROSURGEON**

Dr. James King is a highly trained neurosurgeon with a primary interest in pituitary disease. He is the Director of Training in Neurosurgery at Royal Melbourne, the Head of Pituitary Surgery and the Deputy Director of the Department of Neurosurgery.



**Neda Haghighi**

**RADIATION ONCOLOGIST**

Dr. Neda Haghighi leads the Victorian Gamma Knife service, specializing in stereotactic radiation treatments, with a keen interest in skull base tumors and functional neurological disorders.

# Activities

The past year's suite of initiatives and events reflects the APF'S efforts to support and educate our community, embodying our mission in every action

**Pituitary Awareness Month Events:** In a testament to our mission's vibrancy, the APF hosted a series of successful in-person events during Pituitary Awareness Month, spanning across Sydney, Melbourne, and the Gold Coast. These gatherings not only reinforced our commitment to community building but also served as a platform for education and support.

**ESA/SRB/APEG/NZSE Annual Scientific Meeting 2022:** Further extending our reach, the APF marked its presence at the prestigious ESA/SRB/APEG/NZSE Annual Scientific Meeting 2022 in Christchurch. Here, we had the opportunity to engage with the broader scientific community, showcasing our initiatives and learning from global leaders in endocrinology.

**Novo Nordisk Panel:** A highlight of the year was our participation in the Novo Nordisk panel event in Sydney. Marla Cawthorne took the stage, not just as a representative of APF but also through the lens of a caregiver, sharing insights that resonated with many and amplified the voices of patients and their families.

**Updated Fact Sheets:** Our collaborative efforts with pharmaceutical partners have yielded updated and refined educational materials. With the expertise of our Medical Advisory Committee, Endocrine Society of Australia, and Endocrine Nurses Society of Australia, we've overhauled our fact sheets and GP Fact File, ensuring that accurate information is at the fingertips of those who need it most.

**Advocacy for PBS Listing of Long-Acting Growth Hormone:** The APF played a pivotal role in the campaign for the Pharmaceutical Benefits Scheme (PBS) listing of long-acting Growth Hormone, a significant milestone for patient treatment options. Our awareness efforts spanned across multiple platforms including Channel 10 news, the MedicAlert Foundation, and the Australian Nursing and Midwifery Journal. By sharing patient stories, we've highlighted the crucial need for accessible and diverse treatment avenues for those with pituitary conditions

**New Website and Membership Platform:** Striving for innovation and accessibility, we launched an improved APF website, characterised by ease of navigation and up-to-date information, all wrapped in a fresh, inviting design. In tandem, a new membership platform now offers an enhanced user experience, streamlining the membership processes and increased security functionality.

**Zoom Support Groups:** Recognising the need for accessible and flexible support systems, we established Zoom support groups in August 2022. This initiative ensures continuous and immediate connection among our community members, providing a space for support and exchange regardless of physical location. These virtual meetings are a practical response to our community's call for more connectedness, demonstrating our commitment to inclusivity and support without boundaries.

**QLD Paediatric Patient Reunion in Brisbane:** March 2023 saw the APF QLD Paediatric Patient Reunion in Brisbane, a gathering which reunited former paediatric pituitary patients, now progressing into their adult lives. We thank Sue Kozij for organizing this event and appreciate the attendance of all families involved



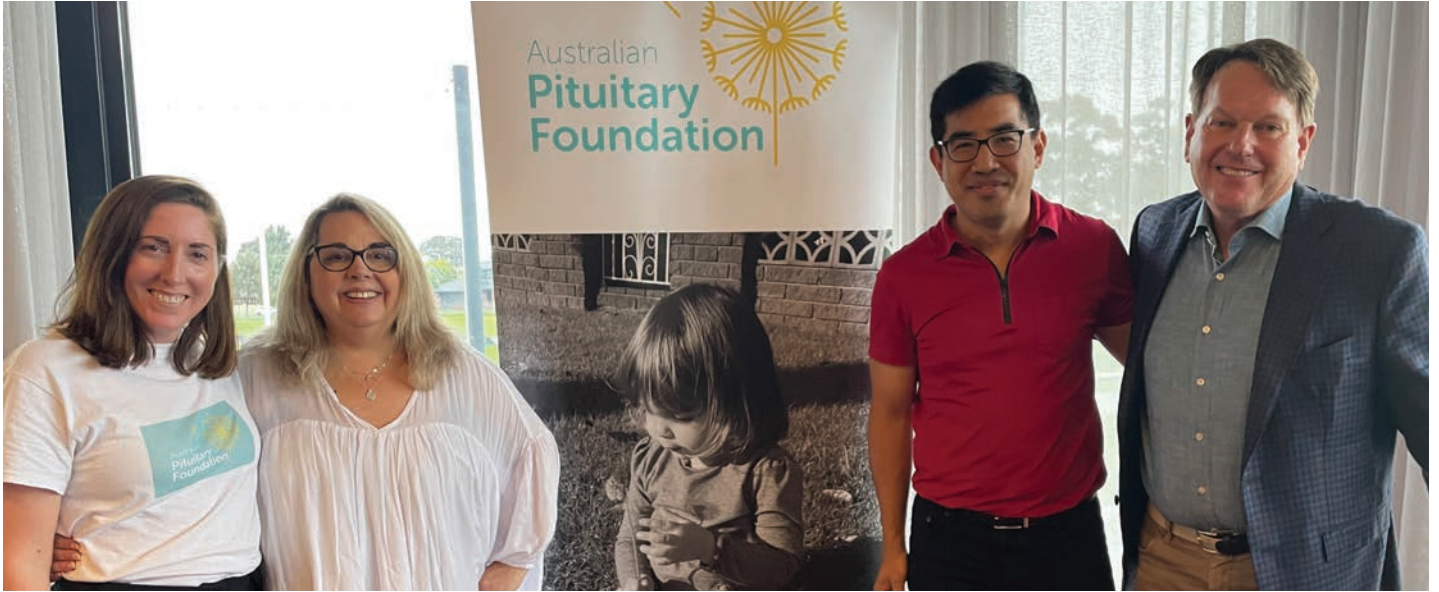
Paediatric Patient Reunion, Brisbane



Pituitary Awareness Month Event, Sydney







# Membership & Community

Over the course of the 2022-2023 year, the Australian Pituitary Foundation has witnessed an increase in the scale and depth of its community engagement. Our collective efforts have resulted in a significant rise in the number of friends, donors, and supporters, each contributing to the robust fabric of our foundation.

## Memberships

**Community:** 674  
**Members:** 63  
**Friends:** 572  
**Donors:** 55

## Volunteers

**Directors:** 8  
**Medical Advisory Committee:** 4  
**Patient Support Subcommittee:** 3  
**Fundraising & Communications Subcommittee:** 2

2023

# Financial Report 22-23

In the fiscal year 2022-2023, the Australian Pituitary Foundation (APF) sustained its financial health through careful management (P&L attached). Shari Dawson's appointment as General Manager on a 12-month contract in March 2023 was a key administrative decision, supported by a steady stream of sponsorships, grants, and donations that balanced out our low operating costs. This careful balance of income and expenses has allowed us to continue our work effectively.



+\$118,417.53

Donations  
in 2023



+\$48,981.82

Grant Funds  
in 2023



+\$2682.87

Membership  
in 2023

# Financial Statement 22-23

## Australian Pituitary Foundation LTD

A.C.N. 088 357 902

### Statement of Comprehensive Income - For Year Ended 30 June 2023

	2023 (\$)	2022 (\$)
<b>Revenue from Ordinary Activities</b>		
Donations	118,417.53	8,127.72
Fee Income	210.00	-
Sponsorship Sales	-	20,000.00
Membership fees	2,682.87	3,545.10
Fundraising	228.95	-
Interest Received	882.12	346.87
Grant Funds	48,981.82	-
<b>TOTAL REVENUE FROM ORDINARY ACTIVITIES</b>	<b>171,403.29</b>	<b>32,019.69</b>
<b>Expenses from Ordinary Activities</b>		
Bank Charges	-	20.00
Merchant Commissions	121.27	135.64
Educational Resources	3,500.00	-
Advertising	268.18	181.82
Audit Fees	-	1,653.00
Promotional	45.45	-
Printing	921.06	-
Catering room hire support	2,961.38	-
Fund-raising Expenses	5,560.00	-
Gift Presentations	-	409.01
Insurance	2,839.59	2,707.00
Relocation Expenses	673.75	-
Other Employer Expenses	3565.45	45.45
Postage Shipping	6.45	-
Telephone	772.94	778.07
Internet	-	47.73
Web Hosting and IT Expenses	1,974.88	2,627.27
Postage & courier	157.27	189.09
Repairs & maintenance	-	413.64
Printing & stationary	613.09	-
Sponsorships & Grants	1,000.00	52,056.06
Subscriptions	1,232.71	768.14
Superannuation expense	7,408.24	3,381.88
Telephone	25.22	40.91
Travel & accommodation	4,122.94	2,084.28
Wages & salaries	75,006.73	39,878.84
Work cover insurance	583.96	213.75
Storage	140.91	-
<b>TOTAL EXPENSES FROM ORDINARY ACTIVITIES</b>	<b>113,502.07</b>	<b>107,631.58</b>
<b>Operating Profit</b>	<b>57,901.22</b>	<b>-75,611.89</b>
<b>Plus Other Income</b>		
Other income	0.01	329.00
State Gov Grant - Covid19	-	20,000.00
<b>TOTAL OTHER INCOME</b>	<b>0.01</b>	<b>20,329.00</b>
<b>PROFIT FOR THE YEAR</b>	<b>57,901.23</b>	<b>-55,282.89</b>

# Financial Statement 22-23

## Australian Pituitary Foundation LTD

A.C.N. 088 357 902

### Balance Sheet – As At 30 June 2023

	2023 (\$)	2022 (\$)
<b>Banking</b>		
Cheque Account	104,531.36	56,629.95
Small Payments	1,360.70	1,360.70
Payroll Clearing a/c	(2,628.31)	-
Maxi Account	49,850.89	49,348.80
Westpac	51,264.24	51,264.24
Term Deposits (Manual Entry)	131,756.87	80,108.90
Prepayments	(1,000.00)	-
Electronic Clearing Account	2,034.31	-
Pledges Receivable	-	11,125.30
<b>TOTAL BANKING</b>	<b>337,170.06</b>	<b>249,837.89</b>
<b>Current Assets</b>		
Accrued Interest - Term Deposit	1,094.35	1,281.61
Website Cost	11,271.40	-
<b>TOTAL CURRENT ASSETS</b>	<b>12,365.75</b>	<b>1,281.61</b>
<b>Fixed Assets</b>		
Office Equipment at Cost	31,646.55	29,953.91
Office Equip. Accum Deprec.	(29,792.93)	(24,309.30)
<b>Total Fixed Assets</b>	<b>1,853.62</b>	<b>5,644.61</b>
<b>TOTAL ASSETS</b>	<b>351,389.43</b>	<b>256,764.11</b>
<b>Current Liabilities</b>		
GST Collected	224.54	1,274.71
GST paid	(3,476.68)	(823.50)
PAYG withholdings payable	8,554.00	2,256.00
Superannuation payable	1,978.83	-
<b>TOTAL CURRENT LIABILITIES</b>	<b>7,280.69</b>	<b>2,707.21</b>
<b>NET ASSETS</b>	<b>344,108.74</b>	<b>254,056.90</b>



# Thank you to our community

**YOUR ENDURING  
SUPPORT  
LAYS THE  
CORNERSTONE  
FOR A PROMISING  
FUTURE.**

As we review the achievements of the past year and set our objectives for the future, it's the unwavering direction provided by our vision and the precise aims of our mission that navigate our course. We cherish each contribution from our community; your stories, time, and engagement are the essential elements that fuel our advancement.

Looking forward, we are ready to launch new initiatives and establish partnerships that will extend our reach and enrich the support we offer. Your enduring support lays the cornerstone for a promising future.

#### **Acknowledgments**

Our path this past year has been shaped by the collective commitment of many. To our members, volunteers, supporters, and partners: your dedication empowers our mission. Together, we are forging a path toward a future where every person impacted by a pituitary condition has the resources and knowledge necessary for a wholesome life.

